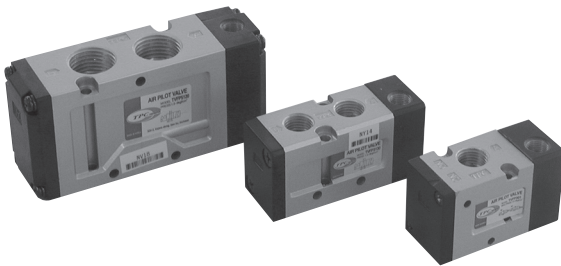


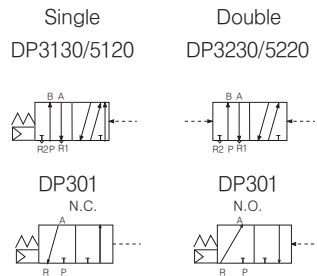
Series **DP300/3000/5000**

3 · 5 Port Air Pilot Valve



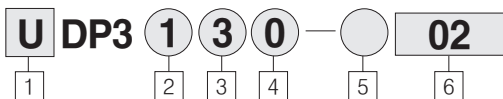
- **COMPACT SIZE AND LIGHT WEIGHT**
 - 0.63 inch Width (Series UDP300, UDP3000)
 - 1.26 inch Width (Series UDP5000)
- **LARGE FLOW CAPACITY**
 - Cv. 1.0 - NPT 1/4 " (Series UDP300, UDP3000)
 - Cv. 3.2 - NPT 1/2 " (Series UDP5000)

Symbol



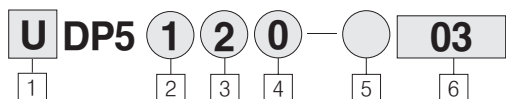
How to Order

DP3000



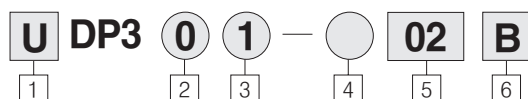
- | | |
|--|--|
| <p>1 Series DP3000
Blank : Metric (PT)
U : NPT (UNF)</p> <p>2 Configuration
1 : Single Pilot type
2 : Double Pilot type</p> <p>3 Body Type
3 : For 30 type Manifold (Body Ported)</p> | <p>4 Body Specifications
0 : Standard</p> <p>5 Thread
Blank : Rc (PT)
G : Rc (PF)</p> <p>6 Port Size (P, A, B)
01 : 1/8 "
02 : 1/4 "
* Exhaust Port is only 1/8 "</p> |
|--|--|

DP5000



- | | |
|--|--|
| <p>1 Series DP5000
Blank : Metric (PT)
U : NPT (UNF)</p> <p>2 Configuration
1 : Single pilot type
2 : Double pilot type</p> <p>3 Body Type
2 : For 20 type Manifold (Body Ported)</p> | <p>4 Body Specifications
0 : Standard</p> <p>5 Thread
Blank : Rc (PT)
G : Rc (PF)</p> <p>6 Port Size (P, A, B)
03 : 3/8 "
04 : 1/2 "
* Exhaust Port is only 1/8 "</p> |
|--|--|

DP300



- | | | | | | |
|--|--|---|--|--|---|
| <p>1 Series DP300
Blank : Metric (PT)
U : NPT (UNF)</p> | <p>2 Action
0 : Normally Closed /
Normally Open</p> | <p>3 Body Type
1 : Body Ported</p> | <p>4 Thread
Blank : Rc (PT)
G : Rc (PF)</p> | <p>5 Port size (P, A, R)
01 : 1/8 "
02 : 1/4 "
* Exhaust port is only 1/8 "</p> | <p>6 Body Type
A : N.C
B : N.O</p> |
|--|--|---|--|--|---|

Series DP300/3000/5000

Specifications			
Fluid	Air		
Operating Pressure Range	2 Position	Single	0.15~0.9 MPa(21~128PSI)
		Double	0.1~0.9 Mpa(14~128PSI)
Ambient and Fluid Temperature	MAX. 60°C(140°F)		
Pilot Pressure Range	2 Position	Single	(Note2) 0.16~0.9 Mpa(24~128PSI)
		Double	0.1~0.9 Mpa(14~128PSI)
Lubrication	Not required		
Impact/Vibration Resistance	30G / 5G (8.3 ~ 2000Hz)		
Mounting Position	Free		
(Note 1) Effective Orifice cm^2 (Cv factor)	1/8 "	14 (0.8)	
	1/4 "	17.5 (1.0)	
	3/8 "	48 (2.7)	
	1/2 "	56 (3.1)	
Pilot Port Size	Rc(PT) 1/8 Common use		

(Note 1) Cv—Capacity Co—efficients(Flow Factors)

(Note 2) The minimum pressure for PILOT should be higher than "A"

P : Supply pressure. A : $0.4 \times P + 14.224$ (PSI)

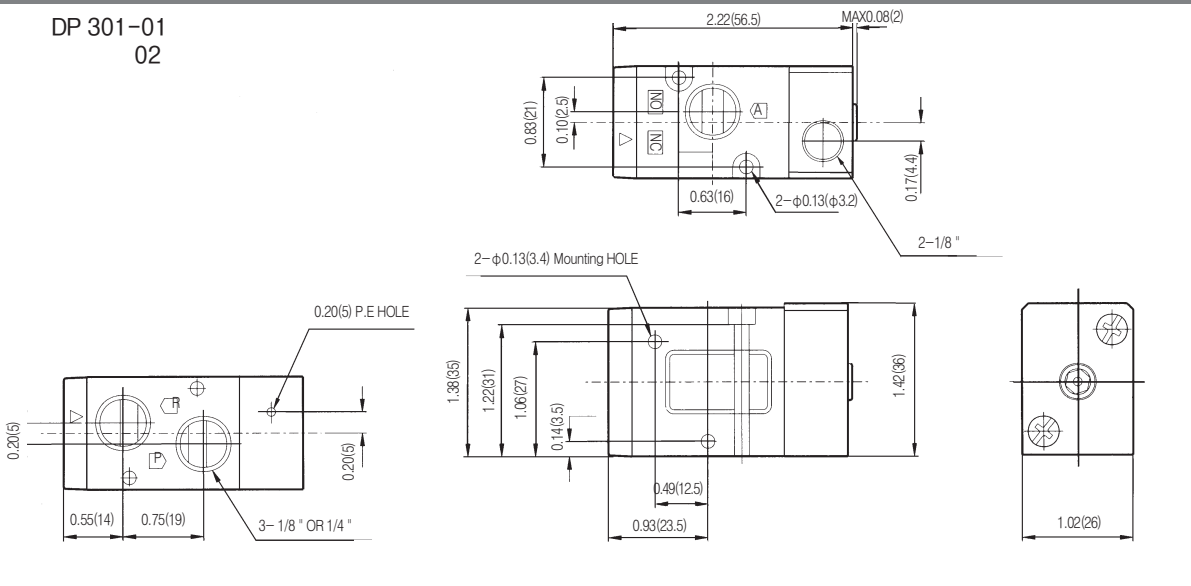
* $cm^2 = 0.0016 \text{ in}^2$

Model					
Piping	Type	Position/Solenoid	Port size	Effective orifice mm^2 (Cv factor)	
				1/8"	1/4"
Body Ported	DP300	2 Position Single	1/8"	19.2(1.07)	22(1.2)
			1/4"		
	DP3130	2 Position Single	1/8"	14(0.8)	18(1.0)
			1/4"	14(0.8)	18(1.0)
	DP5120	2 Position Single	3/8"	3/8"	1/2"
DP5220	2 Position Double	1/2"	48(2.8)	58(3.2)	
			48(2.8)	56(3.2)	

3 Port

DP 301-01
02

inch(mm)



Series DP300/3000/5000

